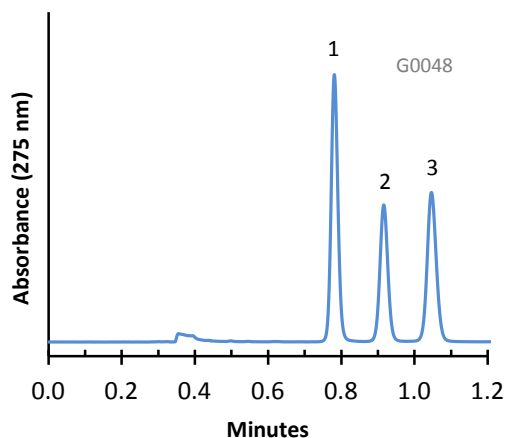


Separation of Fluoroquinolone Drugs on HALO Phenyl-Hexyl Phase



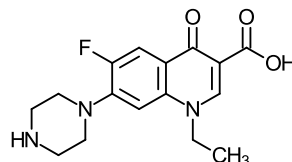
PEAK IDENTITIES:

1. Norfloxacin
2. Ciprofloxacin
3. Lomefloxacin

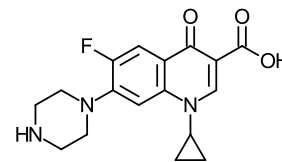
TEST CONDITIONS:

Column: 4.6 x 50 mm, HALO Phenyl-Hexyl
Part Number: 92814-406
Mobile Phase: 82/18: A/B
A= 0.025 M Sodium phosphate, pH=2.5 (adj.)
B= Acetonitrile
Flow Rate: 1.5 mL/min.
Pressure: 170 Bar
Temperature: 30°C
Detection: UV 275 nm, VWD
Injection Volume: 0.3 µL
Sample Solvent=Dimethylformamide/Acetonitrile
Response Time: 0.02 sec.
Flow Cell: 2.5 µL semi-micro
LC System: Shimadzu Prominence UFLC XR
ECV: ~14 µL

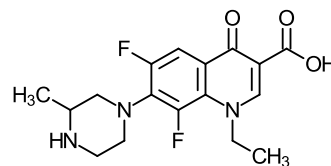
STRUCTURES:



Norfloxacin



Ciprofloxacin



Lomefloxacin

The fluoroquinolone drugs can be quickly separated on HALO Phenyl-Hexyl stationary phase in less than 1.2 minutes.